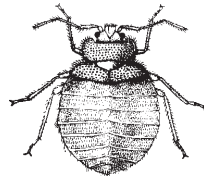


PEST CONTROL BULLETIN NO. 2

BED BUGS

Actual Size 



Adult

GENERAL INFORMATION

The mature bed bug is brown, flat, and between 1/4 and 3/8 inch long. When engorged with food (blood), the body becomes elongated and swollen, and the color changes from brown to dull red.

Bed bugs may be carried into the home from theaters, hotels, rooming houses, or public transportation facilities. They may hitchhike into your house in bundles of laundry.

HABITS AND DAMAGE

A female bed bug lays her eggs in cracks and crevices. These may be where parts of a bed are joined together, around the tufts of a mattress, or in a suitcase touching the end of a bed.

Bed bugs feed on blood (usually human blood) and their bites may cause severe itching. They avoid the light and are seldom seen. Evidence of infestation (other than itching bites) is black or brown spots on surfaces where the bugs have been resting; these spots are digested blood.

CONTROL

Once these pests enter an occupied house, only the application of insecticide will remove them.

Spray slats, springs, and frames of bed. Apply enough spray to wet them thoroughly. Cover the mattresses completely with spray, but do not soak them; be sure to get spray into seams and tufts.

Spray baseboards, the opening or cracks in walls, and between floorboards. If some bed bugs are present several weeks after treatment, spray again.

* * * * *

This information is provided to help homeowners with their pest problems. Insecticides may be purchased at nurseries, hardware, farm supply, and pet stores. If additional help is needed, contact with a registered pest control operator is suggested.

No endorsement of trade names or products is intended, nor is criticism implied of similar products not mentioned.

PRECAUTIONS

1. Handle insecticides with care and follow instructions on the label.
2. Do not use around open flame or exposed foods, and always clean food preparation areas after the use of pesticides.
3. Store out of reach of children and pets, preferably in locked cabinets.
4. Never keep pesticides in anything other than the original container.
5. Never reuse the pesticide container to store any other materials.
6. Dispose of all empty containers properly by placing them in the trash can for removal to the local disposal area.



ORANGE COUNTY VECTOR CONTROL DISTRICT
13001 Garden Grove Boulevard, Garden Grove, CA 92843
(714) 971-2421 • (949) 654-2421

Please Visit Our Web Site www.ocvcd.org