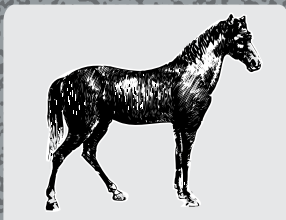


SPECIMEN

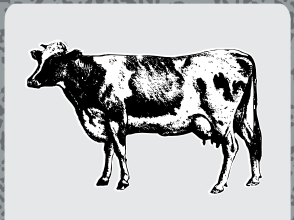
AMDRO[®] PRO FIRE ANT KILLER

**KILLS IMPORTED AND NATIVE FIRE ANTS
AND OTHER ANTS**

KILLS THE QUEEN • DESTROYS THE MOUND



**RANGELAND
APPLICATION***



**PASTURE
APPLICATION***

*Some state restrictions apply – see back label for complete use directions.

**KEEP OUT OF REACH OF CHILDREN
CAUTION!**

See Back Panel for Additional Precautionary Statements
If you do not understand this label,
find someone to explain it to you in detail.

ACTIVE INGREDIENT:

| | |
|---|----------------|
| Hydramethylnon: Tetrahydro-5,5-dimethyl-2(1 <i>H</i>)-pyrimidinone (3-[4-(trifluoromethyl)phenyl]-1-(2-[4-(trifluoromethyl)phenyl]-ethenyl)-2-propenylidene)hydrazone..... | 0.73% |
| Inert Ingredients | 99.27% |
| Total | 100.00% |

Net Weight 2.5 lb.

Distributed by:
AMBRANDS[®]
ATLANTA, GA 30339

PRECAUTIONARY STATEMENTS

HAZARDS TO HUMANS (AND DOMESTIC ANIMALS)

CAUTION!

Harmful if absorbed through skin. Causes moderate eye irritation. Avoid contact with eyes, skin or clothing. May be harmful if swallowed.

Personal Protective Equipment (PPE): Applicators and other handlers must wear:

- Long-sleeve shirt and long pants
- Chemical resistant gloves (such as rubber or waterproof gloves)
- Shoes plus socks

Follow manufacturer's instructions for cleaning/maintaining PPE. If no such instructions for washables exist, use detergent and hot water. Keep and wash PPE separately from other laundry.

Engineering Controls

When handlers use closed systems, enclosed cabs, or aircraft in a manner that meets the requirements listed in the Worker Protection Standard (WPS) for agricultural pesticides [40 CFR 170.240(d)(4-6)], the handler PPE requirements may be reduced or modified as specified in the WPS.

User Safety Recommendations

Users Should:

- Wash hands before eating, drinking, chewing gum, using tobacco or using the toilet.
- Remove clothing/PPE immediately if pesticide gets inside. Then wash thoroughly and put on clean clothing.
- Remove PPE immediately after handling this product. Wash the outside of gloves before removing. As soon as possible, wash thoroughly and change into clean clothing.

FIRST AID

| | |
|-------------------------------|---|
| If on skin or clothing | <ul style="list-style-type: none">• Take off contaminated clothing.• Rinse skin immediately with plenty of water for 15-20 minutes.• Call a poison control center or doctor for treatment advice. |
| If in eyes | <ul style="list-style-type: none">• Hold eye open and rinse slowly and gently with water for 15-20 minutes.• Remove contact lenses, if present, after the first 5 minutes, then continue rinsing.• Call a poison control center for treatment advice. |
| If swallowed | <ul style="list-style-type: none">• Call a poison control center or doctor immediately for treatment advice.• Have person sip a glass of water if able to swallow.• Do not induce vomiting unless told to do so by the poison control center or doctor.• Do not give anything by mouth to an unconscious person. |

Have the product container or label with you when calling a poison control center or doctor or going for treatment.

Environmental Hazards:

This product is toxic to fish. Do not apply directly to water, to areas where surface water is present, or to intertidal areas below the mean high water mark. Do not contaminate water when disposing of equipment washwaters. Do not apply when weather conditions favor drift from target areas.

General Information:

AMDRO PRO Fire Ant Killer is a bait which is highly attractive to imported and native fire ants and other ants. Worker ants carry it into the mound as food for the colony. They eat it and feed it to the queen. AMDRO PRO starts to kill ants immediately. In about a week the queen is dead, which destroys the mound.

Further information regarding ants may be obtained from your Cooperative Agricultural Extension Service.

DIRECTIONS FOR USE

It is a violation of Federal law to use this product in a manner inconsistent with its labeling. Do not apply this product by any method not specified on this label.

Do not apply this product in a way that will contact workers or other persons, either directly or through drift. Only protected handlers may be in the area during application. For any requirements specific to your state or tribe, consult the agency responsible for pesticide regulation.

AGRICULTURAL USE REQUIREMENTS

Use this product only in accordance with its labeling and with the Worker Protection Standard, 40 CFR Part 170. This standard contains requirements for the protection of agricultural workers on farms, forests, nurseries, and greenhouses and handlers of agricultural pesticides. It contains requirements for training, decontamination, notification and emergency assistance. It also contains specific instructions and exceptions pertaining to the statements on this label about personal protective equipment (PPE) and restricted-entry interval. The requirements in this box only apply to uses of this product that are covered by the Worker Protection Standard.

Do not enter or allow worker entry into treated areas during the restricted entry interval (REI) of 12 hours.

The PPE required for early entry to treated areas that is permitted under the Worker Protection Standard and that involves contact with anything that has been treated, such as plants, soil, or water, is:

- Coveralls
- Chemical resistant gloves (such as rubber or waterproof gloves)
- Shoes plus socks

NON-AGRICULTURAL USE REQUIREMENTS

The requirements in this box apply to uses of this product that are NOT within the scope of the Worker Protection Standards for agricultural pesticides (40 CFR Part 170). The WPS applies when this product is used to produce agricultural plants on farms, forests, nurseries, or greenhouses.

- Keep unprotected persons out of treated area during pesticide applications.

Outdoor Use (see rate chart):

AMDRO PRO Fire Ant Killer controls imported and native fire ants and other ants, such as harvester ants and bigheaded ants. AMDRO PRO is for use on lawns, landscaped areas, golf courses, and other non-cropland areas such as airports, roadsides, cemeteries, commercial grounds, parks, school grounds, picnic grounds, athletic fields and other recreational areas, as well as on grounds surrounding poultry houses (excluding runs and ranges) or corrals and other animal holding areas. Avoid direct exposure of animals to AMDRO PRO granules.

AMDRO PRO may be used in and around container or field-grown ornamental and non-bearing nursery stock, and on sod farms (commercial turf). AMDRO PRO may also be applied to the soil around non-bearing fruit or nut trees. Do not harvest food/feed from non-bearing nursery stocks within one year of application.

Do not graze or feed lawn or sod clippings to livestock. Repeat applications as needed.

Grass Forage (Pasture and Rangeland) Use (see rate chart):

AMDRO PRO controls imported and native fire ants and other ants, such as harvester ants and bigheaded ants. AMDRO PRO may only be applied to grass forage (pasture and rangeland) for the control of fire ants only in the following states: Alabama, Arkansas, Florida, Georgia, Louisiana, Mississippi, North Carolina, Oklahoma, South Carolina, Tennessee, Texas, and Virginia. Use of AMDRO PRO on grass forage in states other than those listed is unlawful. Reference the table below for application directions. Applications of AMDRO PRO Fire Ant Killer to grass forage may not exceed a maximum rate of 8.0 pounds per acre per year, and AMDRO PRO may not be applied more than 4 times per year with minimum application intervals of 90 days. Do not cut and bale hay from pastures and rangeland treated with AMDRO PRO until 7 days after the bait application is made. The restrictions on the use of AMDRO PRO on cutting and baling hay do not apply when the treated pasture and rangeland is used solely to support companion animals (e.g., horses, llamas). These companion animals cannot be used for food or feed.

| Treatment | Rate | Comments |
|---|---|---|
| Individual mounds: imported fire ants native fire ants harvester ants bigheaded ants | 2 to 5 level tablespoons | Distribute bait uniformly around the mound. Do not disturb the mound. Do not apply more than 2.0 lb. per acre. Do not contaminate kitchen utensils by use or storage. |
| Broadcast treatment: imported fire ants native fire ants harvester ants | 1.0 - 1.5 lb./acre [2.0 - 3.0 oz./5,000 square feet] | Broadcast bait uniformly with ground (granular spreaders) equipment. |
| Broadcast treatment: bigheaded ants | 1.0 - 2.0 lb./acre [2.0 - 4.0 oz./5,000 square feet] | Broadcast bait uniformly with ground (granular spreaders) equipment. |

Apply when ants are actively foraging (typically when soil temperature is greater than 60F).

STORAGE AND DISPOSAL

Prohibitions: Do not contaminate water, food or feed by storage or disposal. Open dumping is prohibited.

Storage: Store in cool, dry, secure place and keep container tightly closed. Store container away from pets. This product is formulated in an oil bait. Prolonged exposure to air may turn oil rancid and reduce the attractiveness of the bait. Use within 3 months after opening.

Pesticide Disposal: Wastes resulting from the use of this product may be disposed of on site or at an approved waste disposal facility.

Container Disposal: Completely empty bag into application equipment. Then dispose of empty bag in a sanitary landfill or by incineration, or, if allowed by State and local authorities, by burning. If burned, stay out of smoke.

General: Consult Federal, State, or local disposal authorities for approved alternative procedures.

DISCLAIMER

Ambrands makes no express or implied warranty, including any other express or implied warranty, of FITNESS or of MERCHANTABILITY.

In case of an emergency endangering life or property involving this product, call day or night (800)265-0761.

EPA Reg. No. 241-322-73342
EPA Est. No. 5905-AR-1A, 5905-GA-1B
Subscript used is first letter of Run Code on Container.

Distributed by:
AMBRANDS®
ATLANTA, GA 30339